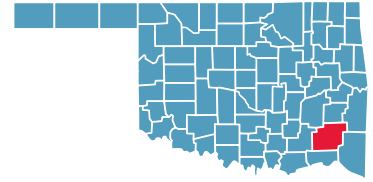


PUSHMATAHA COUNTY

County Seat: Antlers



Number of Children (2005): 2,706

Number of Poor Children (2004): 761

Children are 23.1% of the county population

Child Poverty Rate: 28.6%

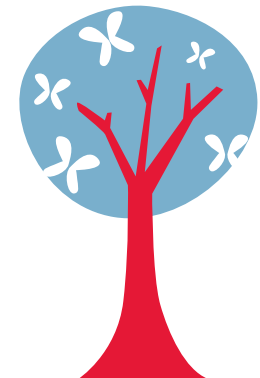
Economic Cluster: #5, Poorest

Indicator	Base Data	-	Worsened	Improved	+	Recent Data	Rank	
BIRTHWEIGHT								
Low Birthweight (<5.5lbs)	2.0% of live births, 1994-96	-262.4%				7.2% of live births, 2003-05	30	
Very Low Birthweight (<3 lbs, 5oz)	0.2% of live births, 1994-96	-190.0%				0.7% of live births, 2003-05	14	
BIRTHS TO TEENS								
Births to Young Teens (ages 15-17)	41.1/1,000 girls 15-17, 1994-96					26.6%	30.2/1,000 girls 15-17, 2003-05	45
Births to Older Teens (ages 18-19)	120.2/1,000 girls 18-19, 1994-96					10.9%	107.1/1,000 girls 18-19, 2003-05	44
Births to Teens (ages 15-19)	65.2/1,000 girls 15-19, 1994-96					8.5%	59.7/1,000 girls 15-19, 2003-05	42
CHILD ABUSE & NEGLECT								
	27.7 confirmed/1,000 children, FY 1995-97					7.3%	25.6 confirmed/1,000 children, FY 2004-06	65
HIGH SCHOOL DROPOUTS								
	4.7% youth <age 19, SY 2001/02-2003/04					20.5%	3.8% youth <age 19, SY 2003/04-2005/06	65
VIOLENT CRIME ARRESTS								
	250.1/100,000 youths 10-17, 1994-96					13.5%	216.5/100,000 youths 10-17, 2003-05	67
MORTALITY								
Infant Mortality (<age 1)	9.9/1,000 live births, 1994-96					27.5%	7.2/1,000 live births, 2003-05	39
Child Death (ages 1-14)	14.9/100,000 children 1-14, 1994-96	-8.0%					16.1/100,000 children 1-14, 2003-05	12
Teen Death (ages 15-19)	122.3/100,000 teens 15-19, 1994-96	-54.7%					189.3/100,000 teens 15-19, 2003-05	71
Child & Teen Death (ages 1-19)	43.6/100,000 youth 1-19, 1994-96	-55.3%					67.7/100,000 youth 1-19, 2003-05	63
ECONOMIC CLUSTER								
	280 Economic Index, 1994-96					10.7%	250 Economic Index, 2003-05	67

■ state change ■ county change ### = zero base - cannot calculate change County Rank (1 = best) (77 = worst)
 Changes of more than 100%—positive or negative—are graphed with broken bar *Indicates a tie with at least one other county.

CHILDHOOD STRESS INDEX

Category / Indicator	Number	Rate	Rank
BIRTH / GENETIC / BIOLOGICAL			
Very Low Birthweight (2003-05)	1 avg annual	0.7%	14
Autism Reported on IEPs (ages 3-21, FFY 2005-07)	4 avg annual	1.4/1,000	34
ENVIRONMENTAL FACTORS			
Poverty (ages 0-17, 2004)	761	28.6%	73
Unemployment (2003-05)	n/a	6.2%	63
EXPOSURE TO TRAUMA			
FEMA Disaster Declarations (Nov 2000-Aug 2007)	8	0.3/1,000 children	23
Adverse Childhood Experiences (ACE Index, 2006/07 Kids Count)	61.2	n/a	76
ACCESS TO TREATMENT			
Untreated by DMHSAS, OJA or Medicaid (ages 9-17, FY 2005-06)			
Untreated Mentally Ill & Substance-Abusers	95 avg annual	30.8%	4
Untreated Serious Emotional Disturbance	0* avg annual	0.0%*	
Suicide (ages 5-24, 2003-05)	0 avg annual	10.9/100,000	62



Childhood Stress Rank

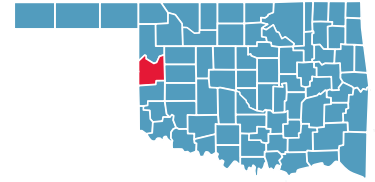
tie for 28

*Indicates a tie with at least one other county.

0.0%* or 0* indicates that, on average, services were provided to numbers of young clients which appear to serve all of the estimated need (prevalence) in the county

ROGER MILLS COUNTY

County Seat: **Cheyenne**



Number of Children (2005): **700**

Number of Poor Children (2004): **98**

Children are **21.1%** of the county population

Child Poverty Rate: **13.9%**

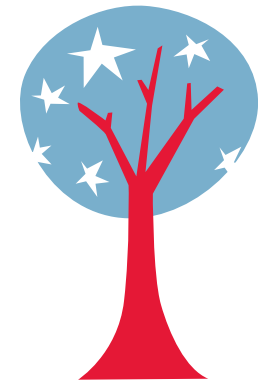
Economic Cluster: **#1, Wealthiest**

Indicator	Base Data	-	Worsened	Improved	+	Recent Data	Rank
BIRTHWEIGHT							
Low Birthweight (<5.5lbs)	9.5% of live births, 1994-96	-0.8%				9.6% of live births, 2003-05	73
Very Low Birthweight (<3 lbs, 5oz)	1.9% of live births, 1994-96				58.0%	0.8% of live births, 2003-05	17
BIRTHS TO TEENS							
Births to Young Teens (ages 15-17)	17.6/1,000 girls 15-17, 1994-96	-22.6%				21.6/1,000 girls 15-17, 2003-05	29
Births to Older Teens (ages 18-19)	86.5/1,000 girls 18-19, 1994-96				29.7%	60.9/1,000 girls 18-19, 2003-05	9
Births to Teens (ages 15-19)	36.1/1,000 girls 15-19, 1994-96	-9.1%				39.4/1,000 girls 15-19, 2003-05	17
CHILD ABUSE & NEGLECT							
	12.5 confirmed/1,000 children, FY 1995-97	-15.6%				14.5 confirmed/1,000 children, FY 2004-06	28
HIGH SCHOOL DROPOUTS							
	1.9% youth <age 19, SY 2001/02-2003/04				31.2%	1.3% youth <age 19, SY 2003/04-2005/06	13
VIOLENT CRIME ARRESTS							
	65.6/100,000 youths 10-17, 1994-96				100.0%	0.0/100,000 youths 10-17, 2003-05	1*
MORTALITY							
Infant Mortality (<age 1)	19.0/1,000 live births, 1994-96				16.0%	16.0/1,000 live births, 2003-05	72
Child Death (ages 1-14)	81.8/100,000 children 1-14, 1994-96				22.1%	63.7/100,000 children 1-14, 2003-05	72
Teen Death (ages 15-19)	121.2/100,000 teens 15-19, 1994-96	-33.3%				161.6/100,000 teens 15-19, 2003-05	66
Child & Teen Death (ages 1-19)	91.7/100,000 youth 1-19, 1994-96				0.3%	91.4/100,000 youth 1-19, 2003-05	70
ECONOMIC CLUSTER							
	117 Economic Index, 1994-96				73.5%	31 Economic Index, 2003-05	1

■ state change ■ county change ### = zero base - cannot calculate change County Rank (1 = best) (77 = worst)
 Changes of more than 100%—positive or negative—are graphed with broken bar *Indicates a tie with at least one other county.

CHILDHOOD STRESS INDEX

Category / Indicator	Number	Rate	Rank
BIRTH / GENETIC / BIOLOGICAL			
Very Low Birthweight (2003-05)	0 avg annual	0.8%	17
Autism Reported on IEPs (ages 3-21, FFY 2005-07)	3 avg annual	3.7/1,000	76
ENVIRONMENTAL FACTORS			
Poverty (ages 0-17, 2004)	98	13.9%	5
Unemployment (2003-05)	n/a	2.4%	1
EXPOSURE TO TRAUMA			
FEMA Disaster Declarations (Nov 2000-Aug 2007)	8	0.1/1,000 children	1
Adverse Childhood Experiences (ACE Index, 2006/07 Kids Count)	13.8	n/a	6
ACCESS TO TREATMENT			
Untreated by DMHSAS, OJA or Medicaid (ages 9-17, FY 2005-06)			
Untreated Mentally Ill & Substance-Abusers	51 avg annual	70.3%	67*
Untreated Serious Emotional Disturbance	25 avg annual	56.6%	
Suicide (ages 5-24, 2003-05)	0 avg annual	43.9/100,000	77



Childhood Stress Rank

10

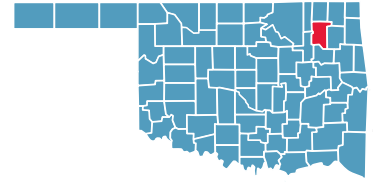
*Indicates a tie with at least one other county.

0.0%* or 0* indicates that, on average, services were provided to numbers of young clients which appear to serve all of the estimated need (prevalence) in the county



ROGERS COUNTY

County Seat: **Claremore**



Number of Children (2005): **19,803**

Number of Poor Children (2004): **2,606**

Children are **24.5%** of the county population

Child Poverty Rate: **13.2%**

Economic Cluster: **#1, Wealthiest**

Indicator	Base Data	-	Worsened	Improved	+	Recent Data	Rank
BIRTHWEIGHT							
Low Birthweight (<5.5lbs)	6.6% of live births, 1994-96					4.6%	6.3% of live births, 2003-05 12
Very Low Birthweight (<3 lbs, 5oz)	1.2% of live births, 1994-96					0.5%	1.2% of live births, 2003-05 45
BIRTHS TO TEENS							
Births to Young Teens (ages 15-17)	30.2/1,000 girls 15-17, 1994-96					61.1%	11.7/1,000 girls 15-17, 2003-05 3
Births to Older Teens (ages 18-19)	96.3/1,000 girls 18-19, 1994-96					22.8%	74.4/1,000 girls 18-19, 2003-05 18
Births to Teens (ages 15-19)	53.1/1,000 girls 15-19, 1994-96					35.2%	34.4/1,000 girls 15-19, 2003-05 11
CHILD ABUSE & NEGLECT	7.1 confirmed/1,000 children, FY 1995-97	-86.8%				13.2 confirmed/1,000 children, FY 2004-06	24
HIGH SCHOOL DROPOUTS	3.0% youth <age 19, SY 2001/02-2003/04	-30.1%				3.9% youth <age 19, SY 2003/04-2005/06	68
VIOLENT CRIME ARRESTS	121.9/100,000 youths 10-17, 1994-96					45.2%	66.7/100,000 youths 10-17, 2003-05 20
MORTALITY							
Infant Mortality (<age 1)	4.9/1,000 live births, 1994-96	-16.6%				5.7/1,000 live births, 2003-05	22
Child Death (ages 1-14)	22.6/100,000 children 1-14, 1994-96	-45.2%				32.8/100,000 children 1-14, 2003-05	45
Teen Death (ages 15-19)	83.6/100,000 teens 15-19, 1994-96					2.3%	81.6/100,000 teens 15-19, 2003-05 35
Child & Teen Death (ages 1-19)	38.7/100,000 youth 1-19, 1994-96	-20.8%				46.8/100,000 youth 1-19, 2003-05	36
ECONOMIC CLUSTER	61 Economic Index, 1994-96	-6.6%				65 Economic Index, 2003-05	11

■ state change

■ county change

= zero base - cannot calculate change

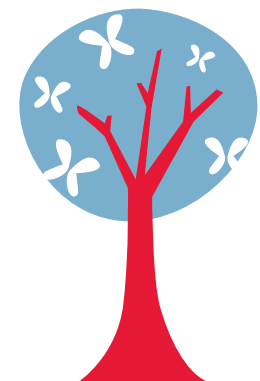
County Rank (1 = best) (77 = worst)

Changes of more than 100%—positive or negative—are graphed with broken bar

*Indicates a tie with at least one other county.

CHILDHOOD STRESS INDEX

Category / Indicator	Number	Rate	Rank
BIRTH / GENETIC / BIOLOGICAL			
Very Low Birthweight (2003-05)	11 avg annual	1.2%	45
Autism Reported on IEPs (ages 3-21, FFY 2005-07)	30 avg annual	1.4/1,000	37
ENVIRONMENTAL FACTORS			
Poverty (ages 0-17, 2004)	2,606	13.2%	3
Unemployment (2003-05)	n/a	4.7%	39
EXPOSURE TO TRAUMA			
FEMA Disaster Declarations (Nov 2000-Aug 2007)	6	3.3/1,000 children	74
Adverse Childhood Experiences (ACE Index, 2006/07 Kids Count)	29.0	n/a	25
ACCESS TO TREATMENT			
Untreated by DMHSAS, OJA or Medicaid (ages 9-17, FY 2005-06)			
Untreated Mentally Ill & Substance-Abusers	1,736 avg annual	75.5%	73
Untreated Serious Emotional Disturbance	897 avg annual	62.7%	
Suicide (ages 5-24, 2003-05)	1 avg annual	2.9/100,000	29



Childhood Stress Rank

46

*Indicates a tie with at least one other county.

0.0%* or 0* indicates that, on average, services were provided to numbers of young clients which appear to serve all of the estimated need (prevalence) in the county

SEMINOLE COUNTY

County Seat: **Wewoka**



Number of Children (2005): **6,208**

Number of Poor Children (2004): **1,900**

Children are **25.1%** of the county population

Child Poverty Rate: **30.7%**

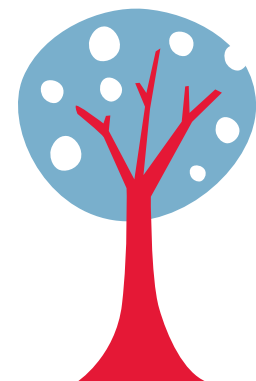
Economic Cluster: **#5, Poorest**

Indicator	Base Data	-	Worsened	Improved	+	Recent Data	Rank
BIRTHWEIGHT							
Low Birthweight (<5.5lbs)	7.6% of live births, 1994-96	-15.1%				8.7% of live births, 2003-05	63
Very Low Birthweight (<3 lbs, 5oz)	1.0% of live births, 1994-96	-105.8%				2.0% of live births, 2003-05	73
BIRTHS TO TEENS							
Births to Young Teens (ages 15-17)	56.1/1,000 girls 15-17, 1994-96				34.2%	36.9/1,000 girls 15-17, 2003-05	64
Births to Older Teens (ages 18-19)	157.1/1,000 girls 18-19, 1994-96				17.8%	129.0/1,000 girls 18-19, 2003-05	64
Births to Teens (ages 15-19)	92.2/1,000 girls 15-19, 1994-96				22.2%	71.7/1,000 girls 15-19, 2003-05	69
CHILD ABUSE & NEGLECT	17.2 confirmed/1,000 children, FY 1995-97	-41.9%				24.4 confirmed/1,000 children, FY 2004-06	60
HIGH SCHOOL DROPOUTS	3.2% youth <age 19, SY 2001/02-2003/04				22.5%	2.4% youth <age 19, SY 2003/04-2005/06	37
VIOLENT CRIME ARRESTS	338.6/100,000 youths 10-17, 1994-96				37.3%	212.2/100,000 youths 10-17, 2003-05	66
MORTALITY							
Infant Mortality (<age 1)	5.8/1,000 live births, 1994-96	-102.7%				11.8/1,000 live births, 2003-05	68
Child Death (ages 1-14)	45.4/100,000 children 1-14, 1994-96				53.2%	21.2/100,000 children 1-14, 2003-05	23
Teen Death (ages 15-19)	52.7/100,000 teens 15-19, 1994-96	-142.8%				127.9/100,000 teens 15-19, 2003-05	56
Child & Teen Death (ages 1-19)	47.4/100,000 youth 1-19, 1994-96	-7.7%				51.0/100,000 youth 1-19, 2003-05	41
ECONOMIC CLUSTER	276 Economic Index, 1994-96	-5.4%				291 Economic Index, 2003-05	76

■ state change ■ county change ### = zero base - cannot calculate change County Rank (1 = best) (77 = worst)
 Changes of more than 100%—positive or negative—are graphed with broken bar *Indicates a tie with at least one other county.

CHILDHOOD STRESS INDEX

Category / Indicator	Number	Rate	Rank
BIRTH / GENETIC / BIOLOGICAL			
Very Low Birthweight (2003-05)	7 avg annual	2.0%	73
Autism Reported on IEPs (ages 3-21, FFY 2005-07)	7 avg annual	1.1/1,000	20
ENVIRONMENTAL FACTORS			
Poverty (ages 0-17, 2004)	1,900	30.7%	75
Unemployment (2003-05)	n/a	9.0%	76
EXPOSURE TO TRAUMA			
FEMA Disaster Declarations (Nov 2000-Aug 2007)	11	0.6/1,000 children	36
Adverse Childhood Experiences (ACE Index, 2006/07 Kids Count)	46.8	n/a	63
ACCESS TO TREATMENT			
Untreated by DMHSAS, OJA or Medicaid (ages 9-17, FY 2005-06)			
Untreated Mentally Ill & Substance-Abusers	353 avg annual	55.4%	32*
Untreated Serious Emotional Disturbance	131 avg annual	33.2%	
Suicide (ages 5-24, 2003-05)	1 avg annual	9.9/100,000	56



Childhood Stress Rank

tie for 61

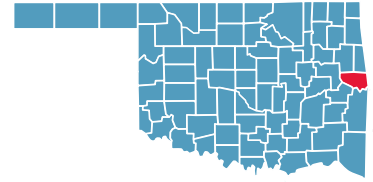
*Indicates a tie with at least one other county.

0.0%* or 0* indicates that, on average, services were provided to numbers of young clients which appear to serve all of the estimated need (prevalence) in the county



SEQUOYAH COUNTY

County Seat: **Sallisaw**



Number of Children (2005): **10,096**

Number of Poor Children (2004): **2,603**

Children are **24.7%** of the county population

Child Poverty Rate: **25.9%**

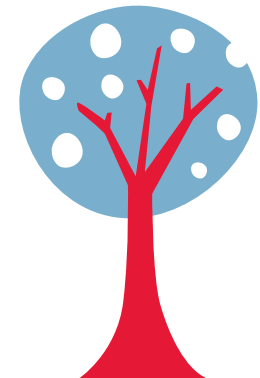
Economic Cluster: **#5, Poorest**

Indicator	Base Data	-	Worsened	Improved	+	Recent Data	Rank
BIRTHWEIGHT							
Low Birthweight (<5.5lbs)	6.2% of live births, 1994-96	-22.9%				7.6% of live births, 2003-05	38
Very Low Birthweight (<3 lbs, 5oz)	1.4% of live births, 1994-96				9.0%	1.3% of live births, 2003-05	53
BIRTHS TO TEENS							
Births to Young Teens (ages 15-17)	42.6/1,000 girls 15-17, 1994-96				30.2%	29.7/1,000 girls 15-17, 2003-05	43
Births to Older Teens (ages 18-19)	129.3/1,000 girls 18-19, 1994-96	-6.1%				137.2/1,000 girls 18-19, 2003-05	70
Births to Teens (ages 15-19)	72.7/1,000 girls 15-19, 1994-96				5.9%	68.4/1,000 girls 15-19, 2003-05	61
CHILD ABUSE & NEGLECT							
	18.6 confirmed/1,000 children, FY 1995-97				60.3%	7.4 confirmed/1,000 children, FY 2004-06	3
HIGH SCHOOL DROPOUTS							
	3.5% youth <age 19, SY 2001/02-2003/04				3.2%	3.4% youth <age 19, SY 2003/04-2005/06	55
VIOLENT CRIME ARRESTS							
	119.8/100,000 youths 10-17, 1994-96	-270.8%				444.4/100,000 youths 10-17, 2003-05	76
MORTALITY							
Infant Mortality (<age 1)	6.4/1,000 live births, 1994-96				14.2%	5.5/1,000 live births, 2003-05	20
Child Death (ages 1-14)	30.2/100,000 children 1-14, 1994-96	-11.3%				33.6/100,000 children 1-14, 2003-05	46
Teen Death (ages 15-19)	103.8/100,000 teens 15-19, 1994-96	-30.6%				135.5/100,000 teens 15-19, 2003-05	61
Child & Teen Death (ages 1-19)	50.2/100,000 youth 1-19, 1994-96	-22.0%				61.2/100,000 youth 1-19, 2003-05	54
ECONOMIC CLUSTER							
	237 Economic Index, 1994-96				8.9%	216 Economic Index, 2003-05	58

■ state change ■ county change ### = zero base - cannot calculate change County Rank (1 = best) (77 = worst)
 Changes of more than 100%—positive or negative—are graphed with broken bar *Indicates a tie with at least one other county.

CHILDHOOD STRESS INDEX

Category / Indicator	Number	Rate	Rank
BIRTH / GENETIC / BIOLOGICAL			
Very Low Birthweight (2003-05)	7 avg annual	1.3%	53
Autism Reported on IEPs (ages 3-21, FFY 2005-07)	21 avg annual	2.0/1,000	59
ENVIRONMENTAL FACTORS			
Poverty (ages 0-17, 2004)	2,603	25.9%	61*
Unemployment (2003-05)	n/a	6.0%	59
EXPOSURE TO TRAUMA			
FEMA Disaster Declarations (Nov 2000-Aug 2007)	7	1.4/1,000 children	62
Adverse Childhood Experiences (ACE Index, 2006/07 Kids Count)	36.7	n/a	45
ACCESS TO TREATMENT			
Untreated by DMHSAS, OJA or Medicaid (ages 9-17, FY 2005-06)			
Untreated Mentally Ill & Substance-Abusers	740 avg annual	65.9%	56
Untreated Serious Emotional Disturbance	321 avg annual	46.0%	65
Suicide (ages 5-24, 2003-05)	1 avg annual	11.9/100,000	65



Childhood Stress Rank

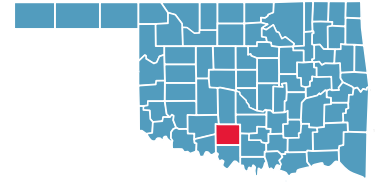
77

*Indicates a tie with at least one other county.

0.0%* or 0* indicates that, on average, services were provided to numbers of young clients which appear to serve all of the estimated need (prevalence) in the county

STEPHENS COUNTY

County Seat: **Duncan**



Number of Children (2005): **9,626**

Number of Poor Children (2004): **1,935**

Children are **22.4%** of the county population

Child Poverty Rate: **20.2%**

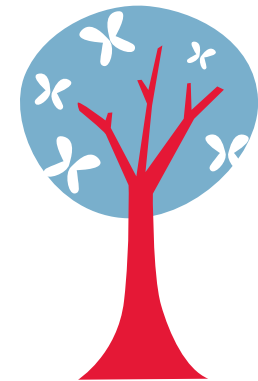
Economic Cluster: **#3, Middle**

Indicator	Base Data	-	Worsened	Improved	+	Recent Data	Rank
BIRTHWEIGHT							
Low Birthweight (<5.5lbs)	7.5% of live births, 1994-96	-4.8%				7.9% of live births, 2003-05	48
Very Low Birthweight (<3 lbs, 5oz)	0.8% of live births, 1994-96	-90.3%				1.6% of live births, 2003-05	63
BIRTHS TO TEENS							
Births to Young Teens (ages 15-17)	43.1/1,000 girls 15-17, 1994-96				52.2%	20.6/1,000 girls 15-17, 2003-05	24
Births to Older Teens (ages 18-19)	120.4/1,000 girls 18-19, 1994-96				13.3%	104.4/1,000 girls 18-19, 2003-05	41
Births to Teens (ages 15-19)	67.8/1,000 girls 15-19, 1994-96				24.1%	51.5/1,000 girls 15-19, 2003-05	28
CHILD ABUSE & NEGLECT							
	9.9 confirmed/1,000 children, FY 1995-97	-74.9%				17.3 confirmed/1,000 children, FY 2004-06	39
HIGH SCHOOL DROPOUTS							
	4.2% youth <age 19, SY 2001/02-2003/04	-15.1%				4.9% youth <age 19, SY 2003/04-2005/06	72
VIOLENT CRIME ARRESTS							
	106.8/100,000 youths 10-17, 1994-96	-35.6%				144.9/100,000 youths 10-17, 2003-05	49
MORTALITY							
Infant Mortality (<age 1)	8.3/1,000 live births, 1994-96	-2.5%				8.5/1,000 live births, 2003-05	51
Child Death (ages 1-14)	34.6/100,000 children 1-14, 1994-96	-16.1%				40.2/100,000 children 1-14, 2003-05	55
Teen Death (ages 15-19)	156.6/100,000 teens 15-19, 1994-96				55.8%	69.3/100,000 teens 15-19, 2003-05	26
Child & Teen Death (ages 1-19)	65.9/100,000 youth 1-19, 1994-96				26.6%	48.3/100,000 youth 1-19, 2003-05	37
ECONOMIC CLUSTER							
	142 Economic Index, 1994-96				15.5%	120 Economic Index, 2003-05	26*

■ state change ■ county change ### = zero base - cannot calculate change County Rank (1 = best) (77 = worst)
 Changes of more than 100%—positive or negative—are graphed with broken bar *Indicates a tie with at least one other county.

CHILDHOOD STRESS INDEX

Category / Indicator	Number	Rate	Rank
BIRTH / GENETIC / BIOLOGICAL			
Very Low Birthweight (2003-05)	9 avg annual	1.6%	63
Autism Reported on IEPs (ages 3-21, FFY 2005-07)	11 avg annual	1.1/1,000	19
ENVIRONMENTAL FACTORS			
Poverty (ages 0-17, 2004)	1,935	20.2%	32*
Unemployment (2003-05)	n/a	4.4%	29*
EXPOSURE TO TRAUMA			
FEMA Disaster Declarations (Nov 2000-Aug 2007)	10	1.0/1,000 children	49
Adverse Childhood Experiences (ACE Index, 2006/07 Kids Count)	28.4	n/a	24
ACCESS TO TREATMENT			
Untreated by DMHSAS, OJA or Medicaid (ages 9-17, FY 2005-06)			
Untreated Mentally Ill & Substance-Abusers	693 avg annual	65.9%	57
Untreated Serious Emotional Disturbance	307 avg annual	47.0%	
Suicide (ages 5-24, 2003-05)	1 avg annual	6.0/100,000	42



Childhood Stress Rank

41

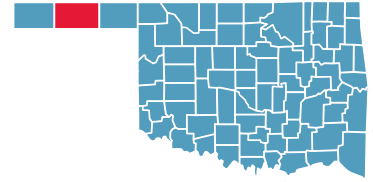
*Indicates a tie with at least one other county.

0.0%* or 0* indicates that, on average, services were provided to numbers of young clients which appear to serve all of the estimated need (prevalence) in the county



TEXAS COUNTY

County Seat: **Guymon**



Number of Children (2005): **5,654**

Number of Poor Children (2004): **841**

Children are **28.1%** of the county population

Child Poverty Rate: **14.9%**

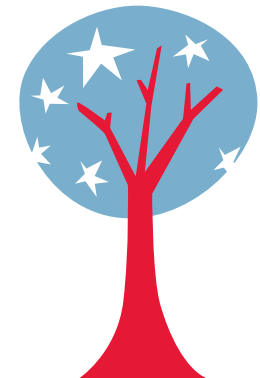
Economic Cluster: **#1, Wealthiest**

Indicator	Base Data	-	Worsened	Improved	+	Recent Data	Rank
BIRTHWEIGHT							
Low Birthweight (<5.5lbs)	5.1% of live births, 1994-96	-27.5%				6.5% of live births, 2003-05	16
Very Low Birthweight (<3 lbs, 5oz)	1.4% of live births, 1994-96				44.9%	0.8% of live births, 2003-05	16
BIRTHS TO TEENS							
Births to Young Teens (ages 15-17)	27.6/1,000 girls 15-17, 1994-96	-82.6%				50.5/1,000 girls 15-17, 2003-05	76
Births to Older Teens (ages 18-19)	99.0/1,000 girls 18-19, 1994-96	-16.9%				115.8/1,000 girls 18-19, 2003-05	50
Births to Teens (ages 15-19)	55.4/1,000 girls 15-19, 1994-96	-42.6%				79.0/1,000 girls 15-19, 2003-05	73
CHILD ABUSE & NEGLECT							
	11.0 confirmed/1,000 children, FY 1995-97				24.0%	8.4 confirmed/1,000 children, FY 2004-06	4
HIGH SCHOOL DROPOUTS							
	4.1% youth <age 19, SY 2001/02-2003/04				17.1%	3.4% youth <age 19, SY 2003/04-2005/06	54
VIOLENT CRIME ARRESTS							
	252.0/100,000 youths 10-17, 1994-96				36.7%	159.5/100,000 youths 10-17, 2003-05	54
MORTALITY							
Infant Mortality (<age 1)	4.3/1,000 live births, 1994-96	-63.2%				7.0/1,000 live births, 2003-05	36
Child Death (ages 1-14)	54.1/100,000 children 1-14, 1994-96				2.0%	53.0/100,000 children 1-14, 2003-05	66
Teen Death (ages 15-19)	46.1/100,000 teens 15-19, 1994-96	-232.9%				153.5/100,000 teens 15-19, 2003-05	63
Child & Teen Death (ages 1-19)	51.9/100,000 youth 1-19, 1994-96	-52.0%				78.8/100,000 youth 1-19, 2003-05	68
ECONOMIC CLUSTER							
	26 Economic Index, 1994-96	-42.3%				37 Economic Index, 2003-05	2

■ state change ■ county change ### = zero base - cannot calculate change County Rank (1 = best) (77 = worst)
 Changes of more than 100%—positive or negative—are graphed with broken bar *Indicates a tie with at least one other county.

CHILDHOOD STRESS INDEX

Category / Indicator	Number	Rate	Rank
BIRTH / GENETIC / BIOLOGICAL			
Very Low Birthweight (2003-05)	3 avg annual	0.8%	16
Autism Reported on IEPs (ages 3-21, FFY 2005-07)	6 avg annual	1.1/1,000	18
ENVIRONMENTAL FACTORS			
Poverty (ages 0-17, 2004)	841	14.9%	8
Unemployment (2003-05)	n/a	3.1%	6*
EXPOSURE TO TRAUMA			
FEMA Disaster Declarations (Nov 2000-Aug 2007)	7	0.8/1,000 children	44
Adverse Childhood Experiences (ACE Index, 2006/07 Kids Count)	15.5	n/a	7
ACCESS TO TREATMENT			
Untreated by DMHSAS, OJA or Medicaid (ages 9-17, FY 2005-06)			
Untreated Mentally Ill & Substance-Abusers	430 avg annual	80.7%	74
Untreated Serious Emotional Disturbance	230 avg annual	69.5%	
Suicide (ages 5-24, 2003-05)	1 avg annual	10.9/100,000	63



Childhood Stress Rank

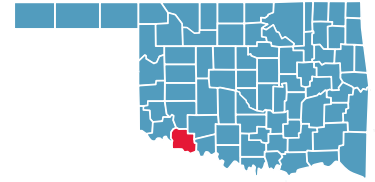
tie for 8

*Indicates a tie with at least one other county.

0.0%* or 0* indicates that, on average, services were provided to numbers of young clients which appear to serve all of the estimated need (prevalence) in the county

TILLMAN COUNTY

County Seat: **Frederick**



Number of Children (2005): **2,039**

Number of Poor Children (2004): **546**

Children are **24.0%** of the county population

Child Poverty Rate: **28.3%**

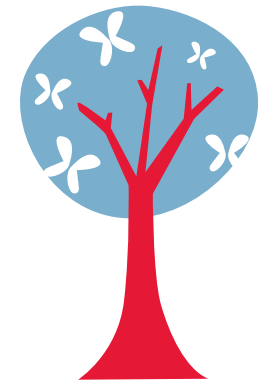
Economic Cluster: **#5, Poorest**

Indicator	Base Data	-	Worsened	Improved	+	Recent Data	Rank
BIRTHWEIGHT							
Low Birthweight (<5.5lbs)	7.3% of live births, 1994-96	-5.8%				7.7% of live births, 2003-05	40
Very Low Birthweight (<3 lbs, 5oz)	1.0% of live births, 1994-96				41.0%	0.6% of live births, 2003-05	8
BIRTHS TO TEENS							
Births to Young Teens (ages 15-17)	65.7/1,000 girls 15-17, 1994-96				32.9%	44.1/1,000 girls 15-17, 2003-05	72
Births to Older Teens (ages 18-19)	160.3/1,000 girls 18-19, 1994-96				26.9%	117.2/1,000 girls 18-19, 2003-05	52
Births to Teens (ages 15-19)	97.7/1,000 girls 15-19, 1994-96				27.5%	70.9/1,000 girls 15-19, 2003-05	66
CHILD ABUSE & NEGLECT	11.7 confirmed/1,000 children, FY 1995-97	-44.5%				16.8 confirmed/1,000 children, FY 2004-06	36
HIGH SCHOOL DROPOUTS	3.4% youth <age 19, SY 2001/02-2003/04	-12.6%				3.8% youth <age 19, SY 2003/04-2005/06	66
VIOLENT CRIME ARRESTS	660.9/100,000 youths 10-17, 1994-96				54.0%	304.1/100,000 youths 10-17, 2003-05	72
MORTALITY							
Infant Mortality (<age 1)	7.5/1,000 live births, 1994-96	-57.4%				11.8/1,000 live births, 2003-05	69
Child Death (ages 1-14)	46.2/100,000 children 1-14, 1994-96	-37.6%				63.6/100,000 children 1-14, 2003-05	71
Teen Death (ages 15-19)	0.0/100,000 teens 15-19, 1994-96				###	91.6/100,000 teens 15-19, 2003-05	41
Child & Teen Death (ages 1-19)	34.3/100,000 youth 1-19, 1994-96	-111.6%				72.5/100,000 youth 1-19, 2003-05	65
ECONOMIC CLUSTER	208 Economic Index, 1994-96	-5.3%				219 Economic Index, 2003-05	60

■ state change ■ county change ### = zero base - cannot calculate change County Rank (1 = best) (77 = worst)
 Changes of more than 100%—positive or negative—are graphed with broken bar *Indicates a tie with at least one other county.

CHILDHOOD STRESS INDEX

Category / Indicator	Number	Rate	Rank
BIRTH / GENETIC / BIOLOGICAL			
Very Low Birthweight (2003-05)	1 avg annual	0.6%	8
Autism Reported on IEPs (ages 3-21, FFY 2005-07)	4 avg annual	1.8/1,000	52
ENVIRONMENTAL FACTORS			
Poverty (ages 0-17, 2004)	546	28.3%	72
Unemployment (2003-05)	n/a	4.5%	36
EXPOSURE TO TRAUMA			
FEMA Disaster Declarations (Nov 2000-Aug 2007)	10	0.2/1,000 children	13
Adverse Childhood Experiences (ACE Index, 2006/07 Kids Count)	35.5	n/a	43
ACCESS TO TREATMENT			
Untreated by DMHSAS, OJA or Medicaid (ages 9-17, FY 2005-06)			
Untreated Mentally Ill & Substance-Abusers	152 avg annual	63.9%	50*
Untreated Serious Emotional Disturbance	68 avg annual	45.7%	
Suicide (ages 5-24, 2003-05)	0 avg annual	0.0/100,000	1*



Childhood Stress Rank

36

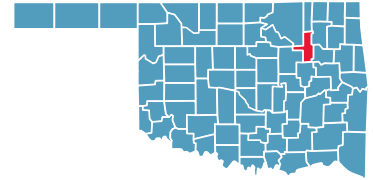
*Indicates a tie with at least one other county.

0.0%* or 0* indicates that, on average, services were provided to numbers of young clients which appear to serve all of the estimated need (prevalence) in the county



TULSA COUNTY

County Seat: **Tulsa**



Number of Children (2005): **145,392**

Number of Poor Children (2004): **25,923**

Children are **25.4%** of the county population

Child Poverty Rate: **17.9%**

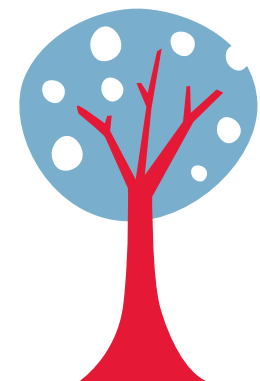
Economic Cluster: **#2, Wealthier**

Indicator	Base Data	-	Worsened	Improved	+	Recent Data	Rank
BIRTHWEIGHT							
Low Birthweight (<5.5lbs)	7.3% of live births, 1994-96	-10.8%				8.1% of live births, 2003-05	50
Very Low Birthweight (<3 lbs, 5oz)	1.4% of live births, 1994-96				0.6%	1.4% of live births, 2003-05	58
BIRTHS TO TEENS							
Births to Young Teens (ages 15-17)	39.8/1,000 girls 15-17, 1994-96				23.0%	30.7/1,000 girls 15-17, 2003-05	48
Births to Older Teens (ages 18-19)	102.4/1,000 girls 18-19, 1994-96				1.6%	100.8/1,000 girls 18-19, 2003-05	34
Births to Teens (ages 15-19)	64.5/1,000 girls 15-19, 1994-96				9.9%	58.1/1,000 girls 15-19, 2003-05	41
CHILD ABUSE & NEGLECT	8.7 confirmed/1,000 children, FY 1995-97	-2.9%				8.9 confirmed/1,000 children, FY 2004-06	7
HIGH SCHOOL DROPOUTS	4.3% youth <age 19, SY 2001/02-2003/04	-1.0%				4.3% youth <age 19, SY 2003/04-2005/06	71
VIOLENT CRIME ARRESTS	588.1/100,000 youths 10-17, 1994-96				28.8%	418.7/100,000 youths 10-17, 2003-05	74
MORTALITY							
Infant Mortality (<age 1)	9.4/1,000 live births, 1994-96				20.6%	7.4/1,000 live births, 2003-05	41
Child Death (ages 1-14)	33.0/100,000 children 1-14, 1994-96				26.7%	24.2/100,000 children 1-14, 2003-05	29
Teen Death (ages 15-19)	79.9/100,000 teens 15-19, 1994-96	-21.7%				97.2/100,000 teens 15-19, 2003-05	47
Child & Teen Death (ages 1-19)	44.8/100,000 youth 1-19, 1994-96				5.3%	42.5/100,000 youth 1-19, 2003-05	28
ECONOMIC CLUSTER	89 Economic Index, 1994-96	-24.7%				111 Economic Index, 2003-05	25

■ state change ■ county change ### = zero base - cannot calculate change County Rank (1 = best) (77 = worst)
 Changes of more than 100%—positive or negative—are graphed with broken bar *Indicates a tie with at least one other county.

CHILDHOOD STRESS INDEX

Category / Indicator	Number	Rate	Rank
BIRTH / GENETIC / BIOLOGICAL			
Very Low Birthweight (2003-05)	127 avg annual	1.4%	58
Autism Reported on IEPs (ages 3-21, FFY 2005-07)	298 avg annual	2.0/1,000	62
ENVIRONMENTAL FACTORS			
Poverty (ages 0-17, 2004)	25,923	17.9%	18
Unemployment (2003-05)	n/a	5.1%	46
EXPOSURE TO TRAUMA			
FEMA Disaster Declarations (Nov 2000-Aug 2007)	6	24.2/1,000 children	77
Adverse Childhood Experiences (ACE Index, 2006/07 Kids Count)	30.9	n/a	31
ACCESS TO TREATMENT			
Untreated by DMHSAS, OJA or Medicaid (ages 9-17, FY 2005-06)			
Untreated Mentally Ill & Substance-Abusers	9,013 avg annual	62.1%	45
Untreated Serious Emotional Disturbance	3,919 avg annual	43.4%	
Suicide (ages 5-24, 2003-05)	14 avg annual	9.3/100,000	54



Childhood Stress Rank

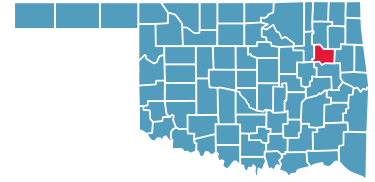
64

*Indicates a tie with at least one other county.

0.0%* or 0* indicates that, on average, services were provided to numbers of young clients which appear to serve all of the estimated need (prevalence) in the county

WAGONER COUNTY

County Seat: **Wagoner**



Number of Children (2005): **15,679**

Number of Poor Children (2004): **2,423**

Children are **24.4%** of the county population

Child Poverty Rate: **15.4%**

Economic Cluster: **#2, Wealthier**

Indicator	Base Data	-	Worsened	Improved	+	Recent Data	Rank
BIRTHWEIGHT							
Low Birthweight (<5.5lbs)	6.8% of live births, 1994-96	-0.7%				6.8% of live births, 2003-05	19
Very Low Birthweight (<3 lbs, 5oz)	1.4% of live births, 1994-96				24.9%	1.1% of live births, 2003-05	37
BIRTHS TO TEENS							
Births to Young Teens (ages 15-17)	27.1/1,000 girls 15-17, 1994-96				45.0%	14.9/1,000 girls 15-17, 2003-05	11
Births to Older Teens (ages 18-19)	105.8/1,000 girls 18-19, 1994-96				31.3%	72.7/1,000 girls 18-19, 2003-05	17
Births to Teens (ages 15-19)	52.3/1,000 girls 15-19, 1994-96				29.3%	37.0/1,000 girls 15-19, 2003-05	12
CHILD ABUSE & NEGLECT	10.0 confirmed/1,000 children, FY 1995-97	-3.5%				10.4 confirmed/1,000 children, FY 2004-06	14
HIGH SCHOOL DROPOUTS	4.1% youth <age 19, SY 2001/02-2003/04	-4.7%				4.2% youth <age 19, SY 2003/04-2005/06	70
VIOLENT CRIME ARRESTS	70.3/100,000 youths 10-17, 1994-96	-5.2%				74.0/100,000 youths 10-17, 2003-05	22
MORTALITY							
Infant Mortality (<age 1)	7.2/1,000 live births, 1994-96				21.9%	5.6/1,000 live births, 2003-05	21
Child Death (ages 1-14)	27.9/100,000 children 1-14, 1994-96				41.4%	16.3/100,000 children 1-14, 2003-05	15
Teen Death (ages 15-19)	99.0/100,000 teens 15-19, 1994-96				34.6%	64.7/100,000 teens 15-19, 2003-05	23
Child & Teen Death (ages 1-19)	46.9/100,000 youth 1-19, 1994-96				36.9%	29.6/100,000 youth 1-19, 2003-05	10
ECONOMIC CLUSTER	71 Economic Index, 1994-96	-53.5%				109 Economic Index, 2003-05	23*

■ state change

■ county change

= zero base - cannot calculate change

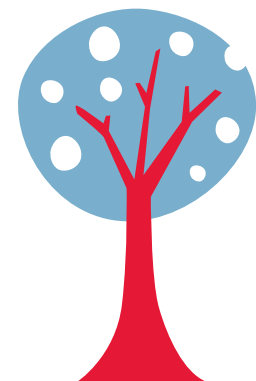
County Rank (1 = best) (77 = worst)

Changes of more than 100%—positive or negative—are graphed with broken bar

*Indicates a tie with at least one other county.

CHILDHOOD STRESS INDEX

Category / Indicator	Number	Rate	Rank
BIRTH / GENETIC / BIOLOGICAL			
Very Low Birthweight (2003-05)	8 avg annual	1.1%	37
Autism Reported on IEPs (ages 3-21, FFY 2005-07)	33 avg annual	2.0/1,000	60
ENVIRONMENTAL FACTORS			
Poverty (ages 0-17, 2004)	2,423	15.4%	10*
Unemployment (2003-05)	n/a	4.8%	40*
EXPOSURE TO TRAUMA			
FEMA Disaster Declarations (Nov 2000-Aug 2007)	7	2.2/1,000 children	71
Adverse Childhood Experiences (ACE Index, 2006/07 Kids Count)	25.7	n/a	19
ACCESS TO TREATMENT			
Untreated by DMHSAS, OJA or Medicaid (ages 9-17, FY 2005-06)			
Untreated Mentally Ill & Substance-Abusers	1,126 avg annual	63.1%	46*
Untreated Serious Emotional Disturbance	476 avg annual	42.9%	
Suicide (ages 5-24, 2003-05)	1 avg annual	3.6/100,000	31



Childhood Stress Rank

52

*Indicates a tie with at least one other county.

0.0%* or 0* indicates that, on average, services were provided to numbers of young clients which appear to serve all of the estimated need (prevalence) in the county